



Wick Lane, London, E3

BUTLER  STAG





**Introducing a spectacular opportunity to reside in a breathtaking 3-bedroom apartment nestled in the vibrant neighborhood of Hackney Wick. This stunning residence boasts not only spacious accommodation but also three balconies, offering panoramic views of the picturesque canal and its surroundings.**



## Leasehold

- Three Double Bedrooms
- Two Large Bathrooms
- Stunning Canal & Stadium Views
- Duel Aspect Layout
- Three Private Balconies
- Spanning at 1550 Sq Ft.
- Private Underground Parking
- Contemporary & Modern Finish Throughout

Spanning well over 1500 square feet, this meticulously designed apartment exudes elegance and sophistication at every turn. Upon entering, you're greeted by a sense of openness, courtesy of the generously proportioned living space that seamlessly flows into the dining area and kitchen. The abundance of natural light flooding through the expansive windows enhances the ambiance, creating a warm and inviting atmosphere.

The apartment features three bedrooms, each providing a tranquil retreat from the hustle and bustle of city life. The master bedroom offers the perfect sanctuary to unwind after a long day. Two additional bedrooms offer ample space and comfort, ensuring that every member of the household enjoys their own private haven.

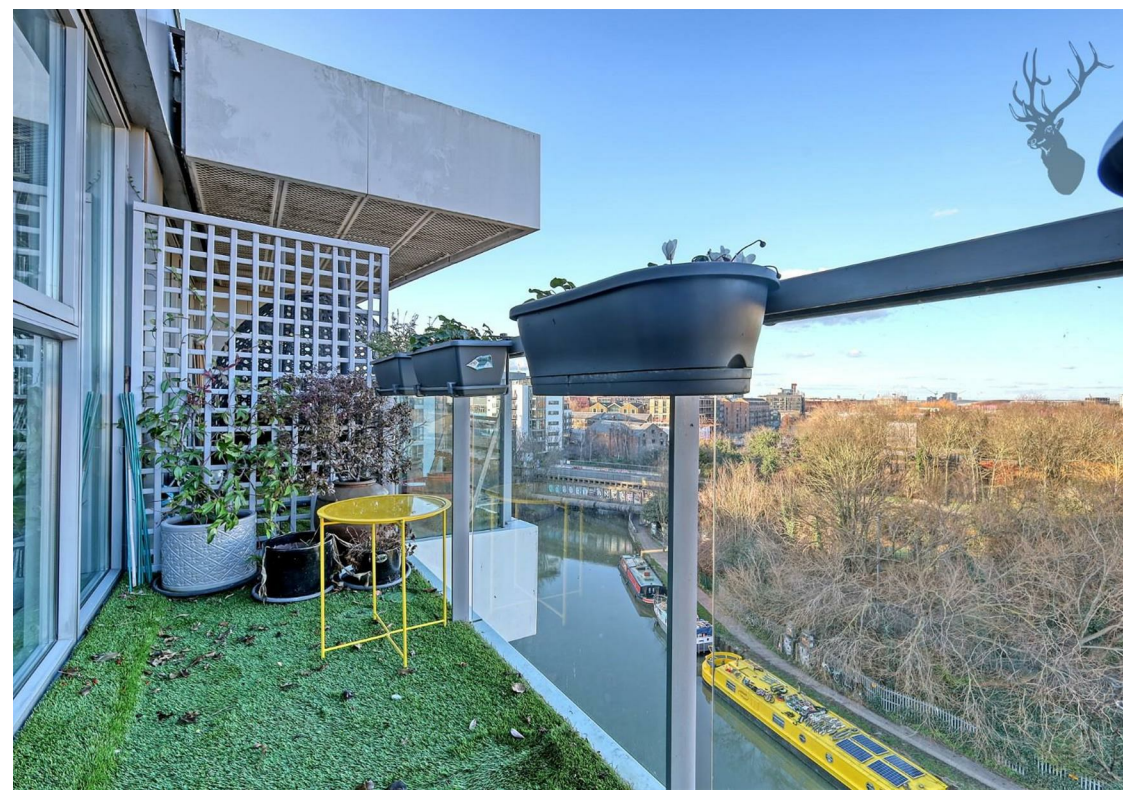
One of the standout features of this remarkable residence is the three balconies that offer unparalleled views of the serene canal below. Whether you're sipping your morning coffee or watching the sunset with a glass of wine, these outdoor spaces provide the perfect backdrop for relaxation and contemplation.

Located in Hackney Wick, residents will have easy access to an array of amenities, including trendy cafes, artisanal eateries, and boutique shops. The vibrant cultural scene and thriving arts community further add to the allure of this sought-after neighborhood.

In summary, this exquisite 3-bedroom apartment offers a rare opportunity to experience luxurious waterfront living in one of London's most dynamic neighborhoods. With its spacious layout, stunning canal views, and unparalleled location, this is truly a place to call home. Don't miss out on the chance to make this extraordinary residence your own. Schedule a viewing today and prepare to be captivated by its undeniable charm and beauty.









## Ink Court

Approx. Gross Internal Area 143.8 Sq M ( 1548 Sq Ft )

BUTLER & STAG



Measurements are approximate and for illustration purposes only. While we do not doubt the accuracy and completeness, we advise you conduct a careful independent assessment of the property to determine monetary value.  
© @modephoto.uk www.modephoto.co.uk

BUTLER & STAG

☎ 020 8102 1236

🏠 508 Roman Road, Bow, London, E3 5LU

✉ bow@butlerandstag.com

[www.butlerandstag.uk](http://www.butlerandstag.uk)

IMPORTANT NOTICE - These particulars have been prepared in good faith and they are not intended to constitute part of an offer or contract. We have not performed a structural survey on this property and the services, appliances and specific fittings have not been tested. All photographs, measurements, floor plans and distances referred to are given as a guide and should not be relied upon.